

BUILDING A-2:

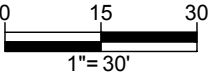
(PHASE II)

13-STORY
RESIDENTIAL BUILDING
W/ GROUND FLOOR RETAIL

RETAIL: 6,700 SF
RESIDENTIAL: 259,931 SF
(260 UNITS)

STREETSCAPE PLAN - BUILDING A2 FRONTAGE

SCALE: 1" = 30'



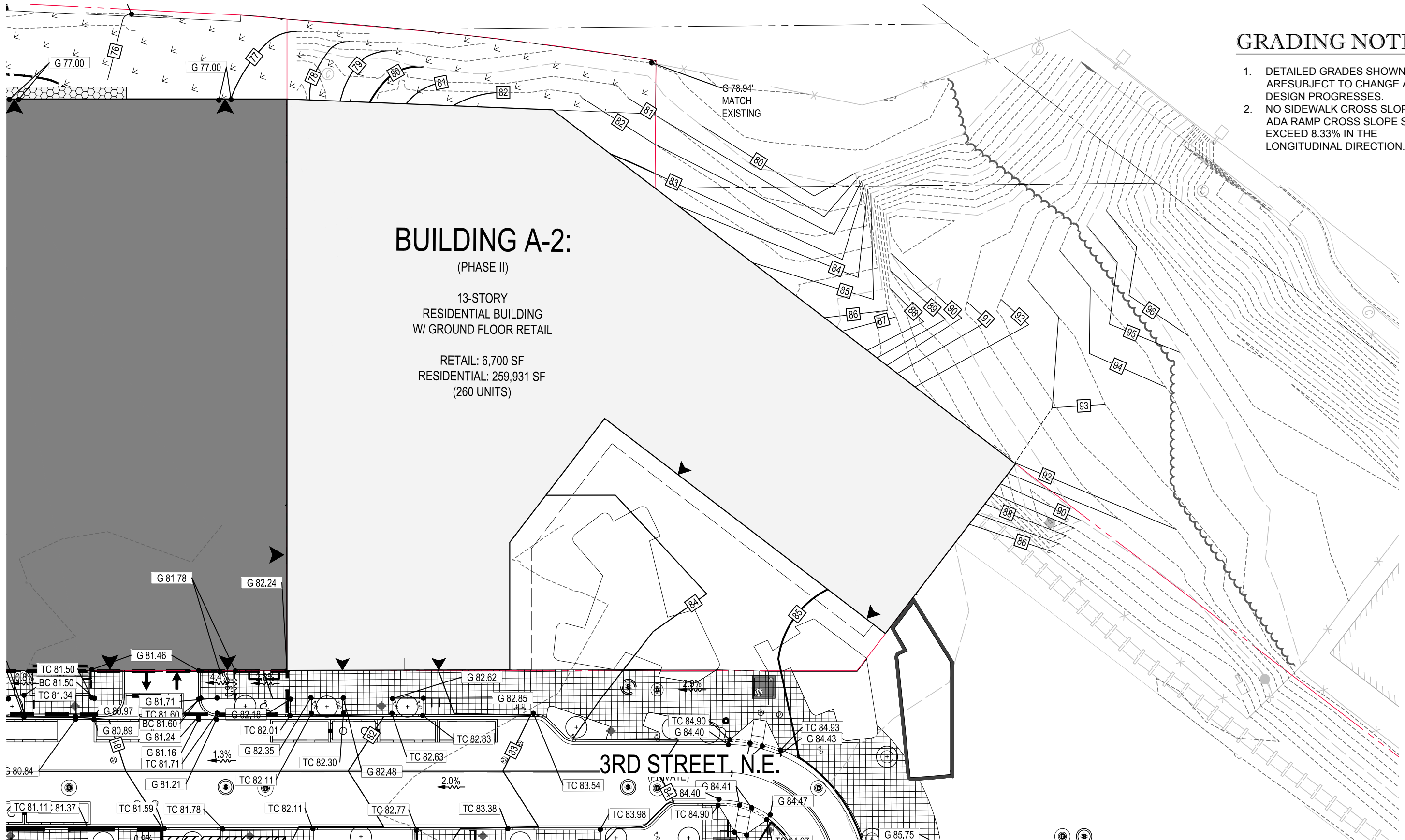
21 MAY, 2019



BOHLER
DC

MARKET TERMINAL - A2 EXHIBITS





GRADING NOTES:

1. DETAILED GRADES SHOWN HEREIN ARE SUBJECT TO CHANGE AS DESIGN PROGRESSES.
2. NO SIDEWALK CROSS SLOPE OR ADA RAMP CROSS SLOPE SHALL EXCEED 8.33% IN THE LONGITUDINAL DIRECTION.

BUILDING A-2:

(PHASE II)

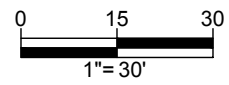
13-STORY
RESIDENTIAL BUILDING
W/ GROUND FLOOR RETAIL

RETAIL: 6,700 SF
RESIDENTIAL: 259,931 SF
(260 UNITS)

3RD STREET, N.E.

GRADING PLAN - BUILDING A2 FRONTAGE

SCALE: 1" = 30'



21 MAY, 2019



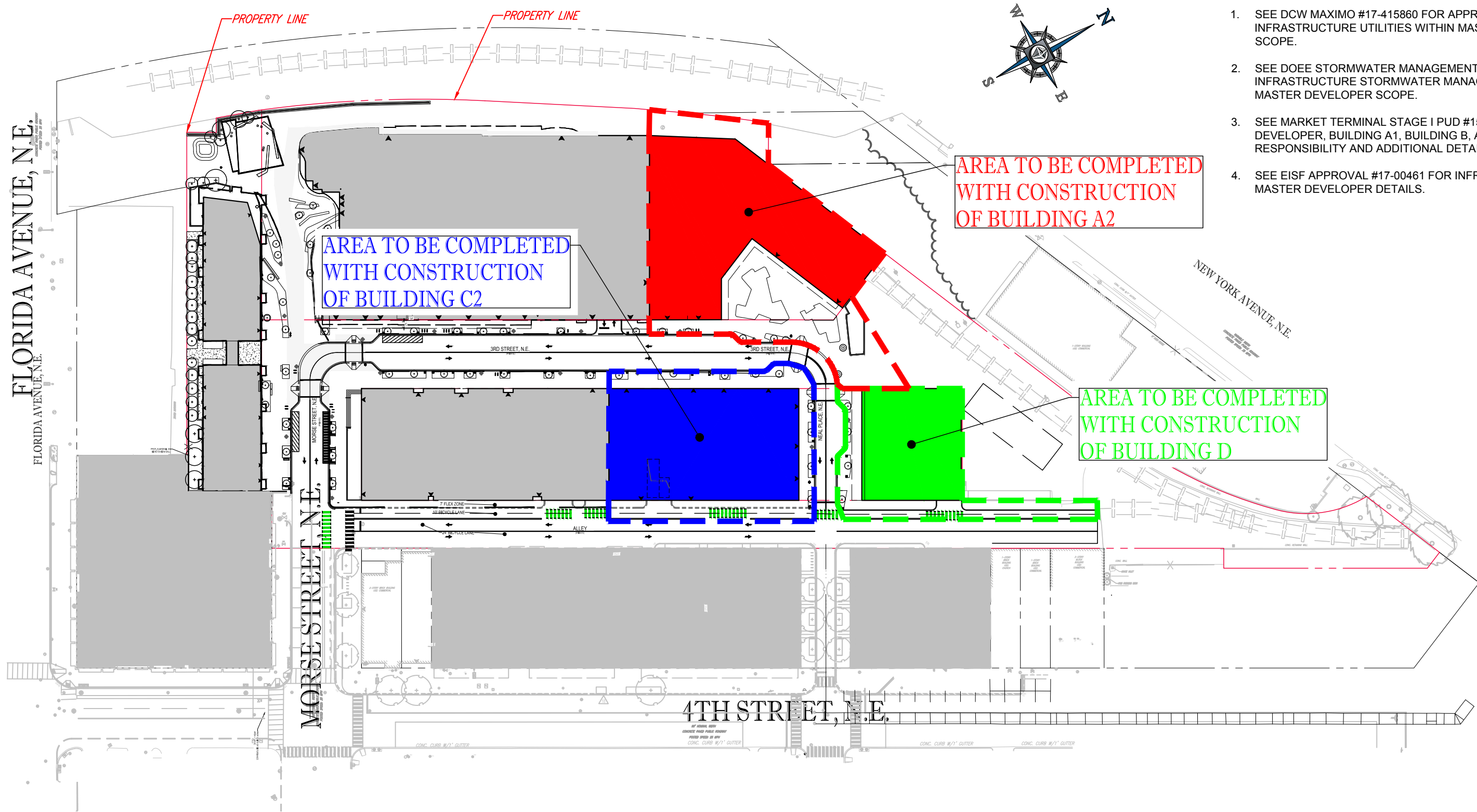
BOHLER
DC

MARKET TERMINAL - A2 EXHIBITS



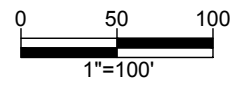
ADDITIONAL REFERENCE NOTES

1. SEE DCW MAXIMO #17-415860 FOR APPROVED INFRASTRUCTURE UTILITIES WITHIN MASTER DEVELOPER SCOPE.
2. SEE DOEE STORMWATER MANAGEMENT PLAN #5519 FOR INFRASTRUCTURE STORMWATER MANAGEMENT WITHIN MASTER DEVELOPER SCOPE.
3. SEE MARKET TERMINAL STAGE I PUD #15-27 FOR MASTER DEVELOPER, BUILDING A1, BUILDING B, AND BUILDING C1 RESPONSIBILITY AND ADDITIONAL DETAILS.
4. SEE EISF APPROVAL #17-00461 FOR INFRASTRUCTURE AND MASTER DEVELOPER DETAILS.



DEVELOPER RESPONSIBILITY PLAN

SCALE: 1" = 100'



21 MAY, 2019



MARKET TERMINAL - A2 EXHIBITS

